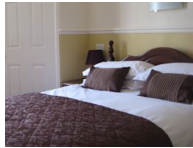


## Accommodation in Whitby The Arches: 4 Star Rating

Website: [www.thearcheswhitby.co.uk](http://www.thearcheswhitby.co.uk)



Our immaculately clean rooms have:-

En-suite facilities, complimentary WiFi, soft and fluffy towels and bath mats, luxury Egyptian cotton bed linen, a selection of luxury toiletries including – hand wash shampoo and hand cream. Also a hairdryer, clock radio and flat screen TV, hospitality tray with teas, coffee, and biscuits.

We offer the following rooms to suit most needs...

Double en-suite, twin room with en-suite, en-suite family room with a double and two single beds, premium en-suite single with an en-suite for your comfort and standard single room with private bathroom on the same floor.

### A Warm Welcome.

Dave and the Girls would be delighted to welcome you to the Arches Guest House, a relaxing family run 4 star Victorian guest house, on Whitby's West Cliff, just 5 minutes walk from Whitby town, harbour and Whitby beach. A warm welcome starts the moment you arrive.

### Comfortable Rooms.

Our stylishly decorated rooms have Egyptian cotton bedding and towels, complimentary refreshments, WiFi and modern flat screen TV's. Each of our double, twin and family rooms are en-suite, and our single rooms each have private bathrooms.

### Freshly Cooked Breakfasts.

We offer generous award winning breakfasts including full English, vegetarian and daily specials, as well as fresh fruit salad, home baked banana bread, homemade marmalade and preserves, and not to mention real coffee!

### The Arches Guesthouse

8, Havelock Place,  
Hudson Street,

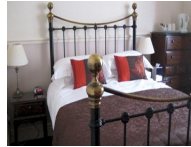
Whitby, North Yorkshire. YO21 3ER

Tel: +44 01947 601880

Email: [enquiries@thearcheswhitby.co.uk](mailto:enquiries@thearcheswhitby.co.uk)

## Accommodation in Whitby The Arches: 4 Star Rating

Email: [enquiries@thearcheswhitby.co.uk](mailto:enquiries@thearcheswhitby.co.uk)



### Whitby

Whitby is regularly featured as one of the most popular tourist destinations in the United Kingdom, attracting visitors from across the globe to the ancient town, alive with quaint taverns, shops, restaurants and art galleries.

The Seacliffe is close to the Spa Pavilion, the Cliff Lift, the West Cliff attractions and Whitby's Cricket, Golf and Football clubs. Nearby, the extensive Pannett Park Museum and Art Gallery, containing many items relating to the voyages of Captain James Cook and also, some beautiful examples of Whitby jet, underlining the town's seafaring heritage and place in shaping the destiny of England.

Only a few minutes walk along the scenic North Promenade is the historic town and bustling harbour, overlooked by the world famous medieval Whitby Abbey, with its 199 steps, that is forever associated with Bram Stoker's novel, Dracula.

### North Yorkshire

From The Seacliffe, a leisurely stroll along the beach (tides permitting) takes you to the tranquility of Sandsend, whilst Runswick Bay, Staithes, Robin Hood's Bay and Goathland are a few minutes drive by car. A little further afield are Scarborough, Helmsley and York.

The heart of the North Yorks Moors National Park is known locally as Heartbeat Country – named after the popular Yorkshire TV series, Heartbeat, based around Goathland ( Aidensfield ) and Whitby ( Ashfordly ). Another famous TV drama, The Royal, is filmed in and around Scarborough and Whitby.

The North York Moors Steam Railway ( NYMR ), seen in the Harry Potter films as the Hogwarts Express, regularly runs across the moors between Pickering & Whitby. The railway passes close to RAF Fylingdales UK, once, but no longer, famous for its gigantic early-warning radar domes – the iconic Golfballs but now a pyramid.

Whether you are planning a short Whitby weekend break, or a longer holiday, The Seacliffe will provide you with an excellent base for exploring and enjoying some of the most interesting and beautiful places in England.

## Accommodation in Whitby

Other Guest Accommodation in Whitby, North Yorkshire

Abbotsleigh

Argyle

Arundel House

Bats and Broomsticks

Beacon

Bleak House

Blencathra

Boulmer

Bramblewick

Cherry Blossom

Devon House

Elford

Glendale

Grantley

Harbour Side

Havelock

Heatherdene

Hudsons

Jaydee

Kimberley House

Kom Bonne

Langley

Lavinia House

Magnolia

Middlethorpe

Morningside

Netherby House

Overdale

Pannet House

Prudom

Ruswarp Hall

Sandpiper

Seacrest

Sea View

Sunnyvale

The Beaches

The Belfry

The Corner

The Firs

The Leeway

The Middleham

The Riviera

The Rosslyn

The Waverley

Weardale

Wentworth

Whitehaven